

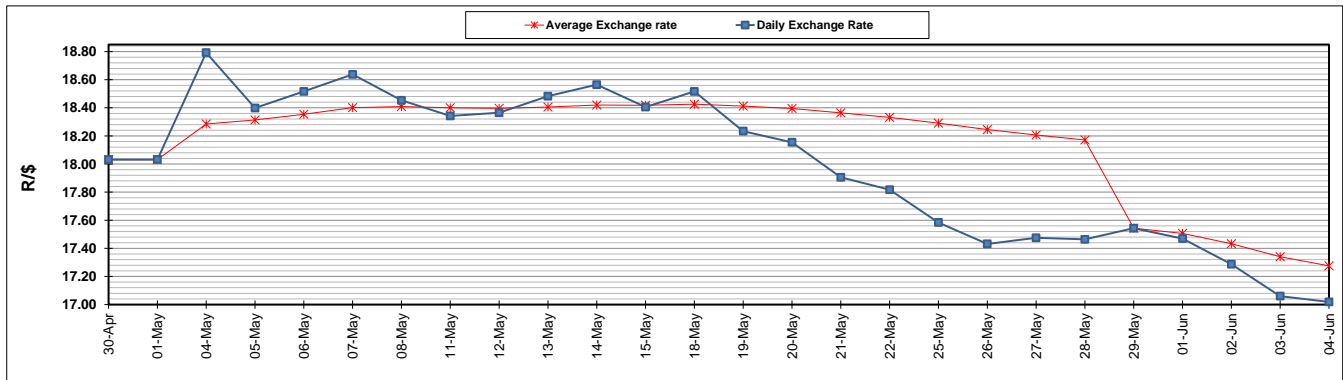
	PETROL 95 ULP	PETROL 93 ULP & LRP	DIESEL 0.05%	DIESEL 0.005%	ILL. PAR.
GAUTENG PUMP PRICE (SA c/l) AS FROM 03/06/2020	1,340.000	1,320.000	-	-	-
WHOLESALE PRICE (SA c/l) AS FROM 03/06/2020	-	-	1,130.560	1,138.960	489.828
SINGLE NATIONAL MAXIMUM RETAIL PRICE	-	-	-	-	597.000
BASIC FUEL PRICE - 04/06/2020 (SA c/l)	513.739	497.492	509.362	514.028	452.242
PRESS RELEASE CONTRIBUTION TO BFP 03/06/2020 - 04/06/2020 (SA c/l)	392.770	382.770	379.630	388.030	285.128
UNIT OVER/(UNDER) RECOVERY - 04/06/2020 (SA c/l)	(120.969)	(114.722)	(129.732)	(125.998)	(167.114)
AVERAGE BASIC FUEL PRICE 29/05/2020 - 04/06/2020	499.064	477.544	500.888	505.584	447.927
AVERAGE UNIT OVER/(UNDER) RECOVERY 29/05/2020 - 04/06/2020	(177.094)	(165.574)	(134.458)	(130.154)	(186.799)

ANALYSIS MOVEMENT OF AVERAGE OVER/(UNDER) RECOVERY

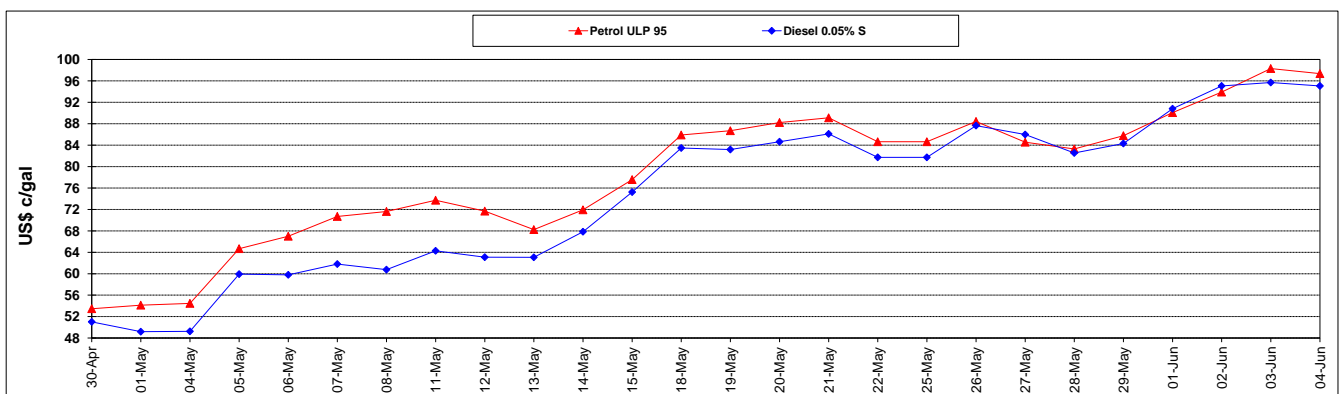
	PETROL 95	PETROL 93	DIESEL 0.05%	DIESEL 0.005%	ILL. PAR.
- MOVEMENT IN INTERNATIONAL PRODUCT PRICES	(202.975)	(190.339)	(160.434)	(156.373)	(210.028)
- MOVEMENT IN EXCHANGE RATE	25.881	24.765	25.976	26.219	23.229
AVERAGE UNIT OVER/(UNDER) RECOVERY 29/05/2020 - 04/06/2020	(177.094)	(165.574)	(134.458)	(130.154)	(186.799)

R/\$ EXCHANGE RATE - (R/\$17.0188 - 04/06/2020)

EXCHANGE RATE USED IN BASIC FUEL PRICE



INTERNATIONAL PRODUCT PRICES OF BASKET USED IN BASIC FUEL PRICE



BASIC FUEL PRICE IN SA CENTS PER LITRE

